

POLE
P119973

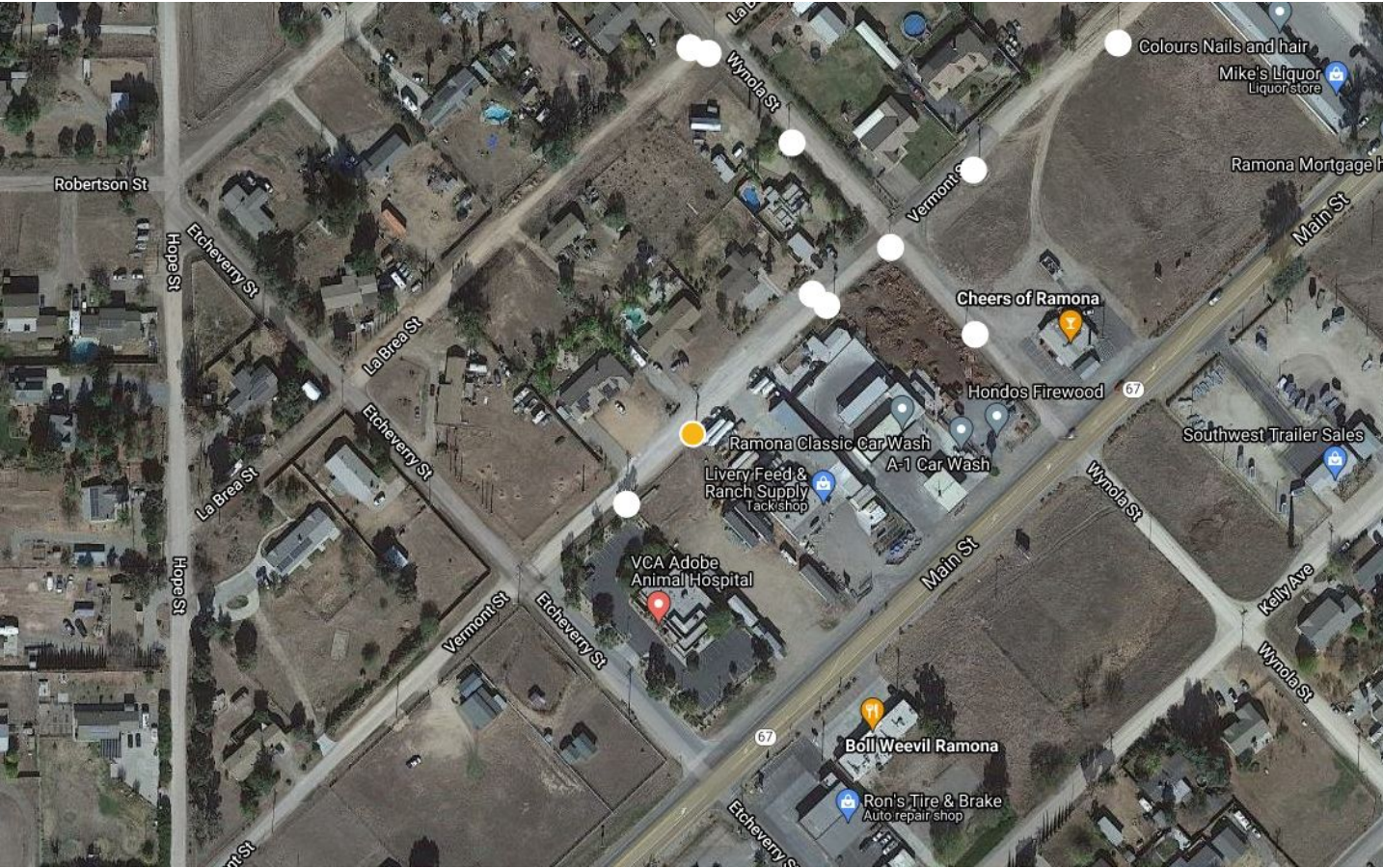
APPROVED
28 Dec 2021

[VIEW ORDER](#)

[VIEW ASSET](#)

LOCATION

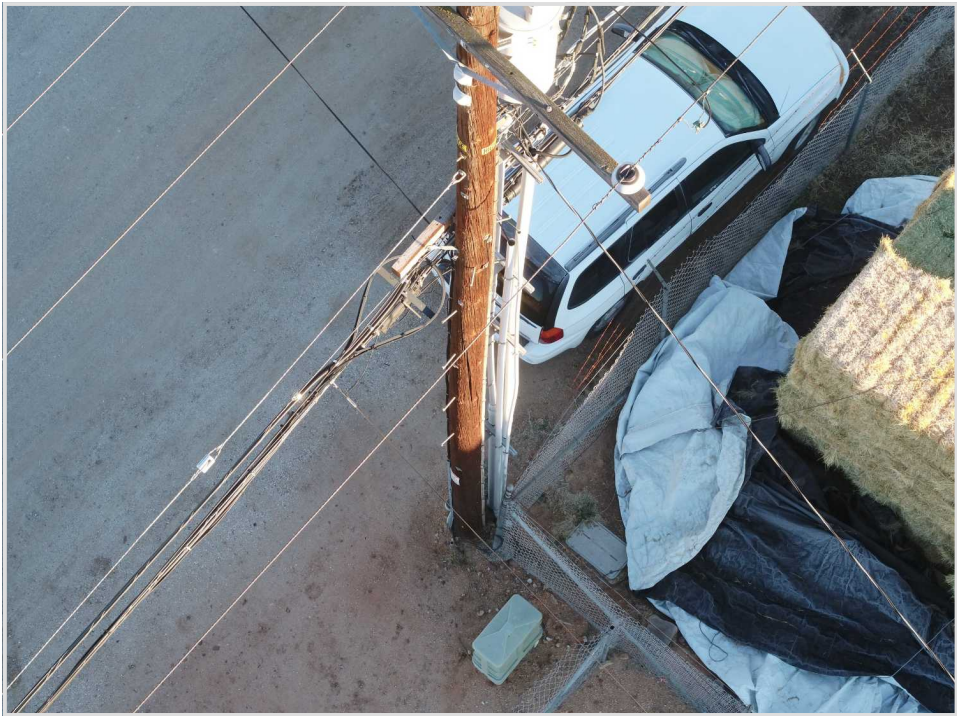
Latitude	33.0262168218	Longitude	-116.8936663715
----------	---------------	-----------	-----------------



ATTRIBUTES

Area	972
Material	WOOD

STRUCTURE



P119973

235 Damaged Arrestor/Insulator/Dead-End



DETAILS

Priority	Non-critical	Inspector	sharris+t2@hilination.net
Date	20 Dec 2021	Party To Advise	Electrical Regional Operations

DESCRIPTION

Damaged insulator